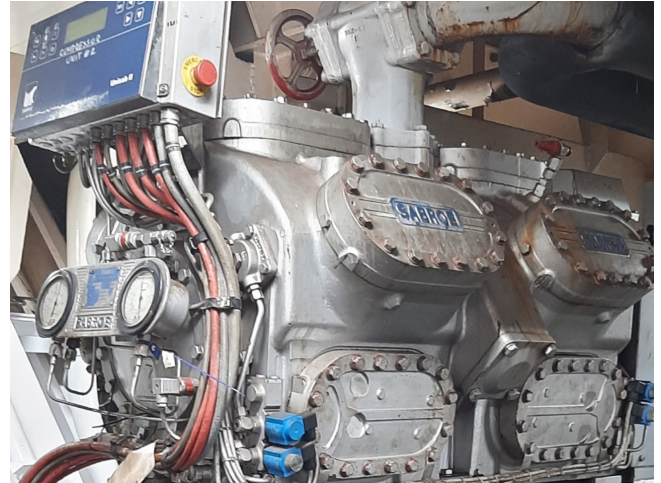


# Sabroe SMC 112 S

## Specifications

Brand	Sabroe
Type	SMC 112 S
Refrigerant	Freon
kW at 0°C/+40°C	553,8
kW at -5°C/+40°C	446,2
kW at -10°C/+40°C	353,3
kW at -20°C/+40°C	211,9
kW at -30°C/+40°C	115,5
Capacity Control	✓
Pressure gauges	✓
Hp/Lp/Op	
Sight Glass	✓
Control panel	✓
m <sup>3</sup> / h	679
Remarks	Y.o.b. 1999
Weight in kg.	2255
Sizes	1600x950x900 mm (LxWxH)
Stock	1



## Description

### Used Sabroe SMC 112 S

Used Sabroe SMC 112 S reciprocating compressor on Freon. Complete with a pressure safety gauges, sight glass and Unisab II control panel. The compressor has a displacement of 679 m<sup>3</sup>/h at 1500 RPM.

\*Why choose for HOSBV? Were not only the largest used refrigeration specialist in Europe, but also, we deliver all equipment including an extensive test, warranty and industrial cleaning.

\*Optional we can also arrange the logistics.

